

New England HOME

Connecticut

Celebrating Fine Design,
Architecture, and Building

Vivid Fall Style

Susanna Salk
at Home on Lake
Waramaug

Second Thoughts
for a Georgian Beauty

The Modern
Essence Behind a
Classic Face

PLUS:
ZESTY PATTERNS,
WOODEN WONDERS,
AND THE TRUE
DELIGHTS
OF BEING FAUX

Fall 2013

\$5.95US \$6.95CAN



Display until January 20, 2014
NEHOMEMAG.COM

Connecticut
designers share their
favorite resources
EDITED BY PAULA M. BODAH

Perspectives

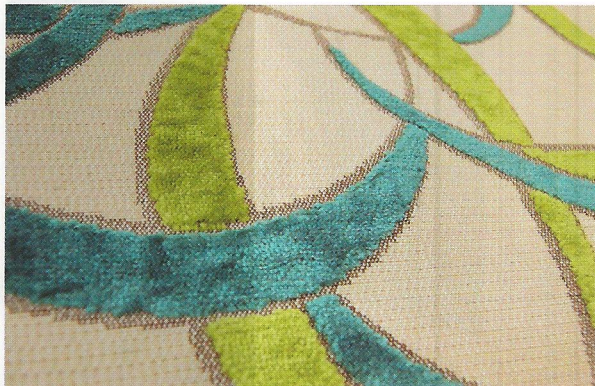
Geometrics: Fabrics/Wall Coverings

CONNIE COOPER

Old World Weavers Fabric from Stark

///

"The vibrant turquoise and lime-green shapes are toned down with the metallic-gray accents to create a playful yet sophisticated fabric. I am using this on a swivel chair for clients who are doctors so they can come home and relax after a long and busy day at work." *Hartford, Boston Design Center, and New York City, starkcarpet.com*



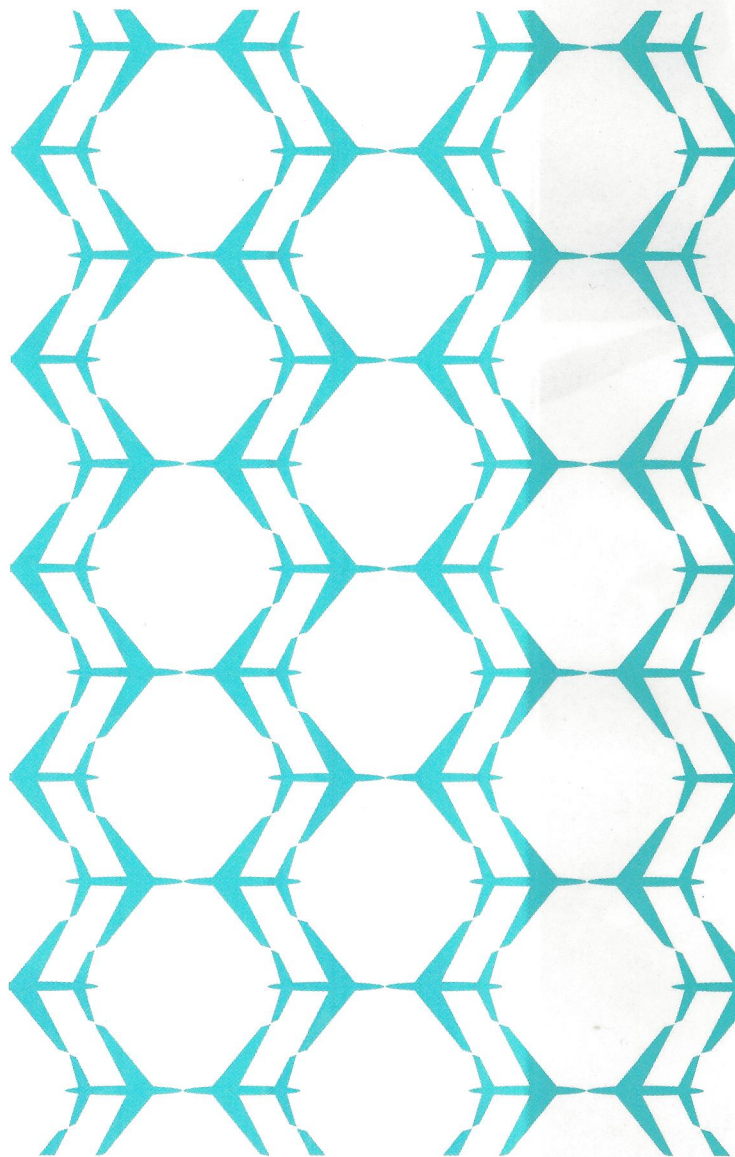
CHRISTINA SULLIVAN
ROUGHAN

**Phillip Jeffries
Indo-Ikat
Wall Covering**

///

"Ikat is an ancient pattern, and I absolutely adore using it in the home. These amazing wall coverings would be perfect for a powder room or dining room, creating subtle geometric patterns and turning any space into a jewel box."

*Holly Hunt, New York City,
(212) 891-2500, hollyhunt.com;
Webster & Company,
Boston Design Center,
(617) 261-9660,
webstercompany.com;
phillipjeffries.com*



HAVILANDE WHITCOMB

St. Christopher Wallpaper, by Given Campbell

///

"Given Campbell does compositions of everyday images that form wonderful, geometric patterns. I just love what happens to the airplanes in this pattern. I would like to use this, shown here in Above the Clouds colorway, for one of my aviation clients." *givencampbell.com, through Havilande Whitcomb Design*

Geometrics: Accessories



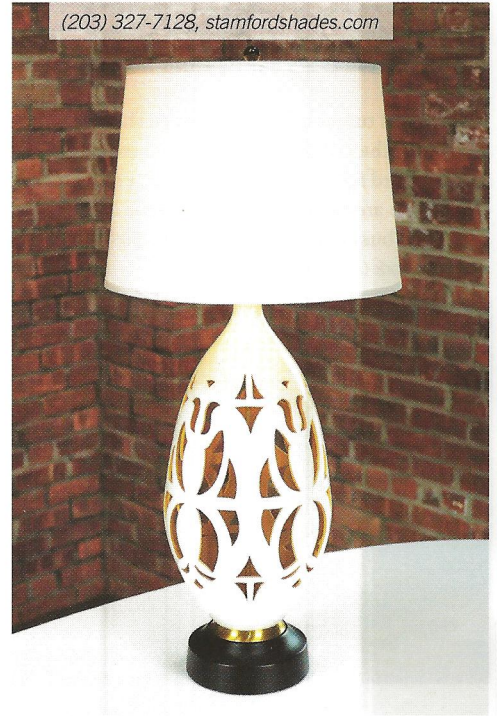
CONNIE COOPER
Elden Lamp
from Arteriors

///
"I love the clean, geometric shapes in this resin and polished-nickel lamp. The artistic design creates a sculptural effect that makes the lamp function as a piece of art."
Arteriors, New York City,
(646) 786-4848,
arteriorshome.com

ARTERIORS

HAVILANDE WHITCOMB
Vintage Lamp

///
"Ellen Scarborough is a great resource for unusual things. This dramatic, oversize lamp, with its geometric cutouts, reminds me of Matisse's late work. It's glazed white with a dark yellow inside. I usually bring my finds to The Accessory Store for shades, and they can rewire anything." Ellen Ward Scarborough Antiques, Stamford, (203) 329-0100, ellenwardscarboroughantiques.com; The Accessory Store, Stamford, (203) 327-7128, stamfordshades.com



NANCY CORRETT



CHRISTINA SULLIVAN ROUGHAN
Flair Shagreen Box

///
"The right accessories complete a room while creating unity and sophistication. This gorgeous shagreen box, with its brass diamond-pattern inlay, is perfect for a coffee table or console."
Flair Home Collection, New York City,
(212) 274-1750, flairhomecollection.com

DEBRA SOMERVILLE



Connie Cooper's background in textile design and a seven-year stint living in Asia have helped to nurture her eclectic approach to design and her ability to create unique spaces that are fresh and interesting but will stand the test of time. Connie Cooper Designs, Westport, (203) 256-9183, conniecooperdesigns.com

Geometrics: Furniture

HAVILANDE WHITCOMB
Vintage Club Chair

///

"I am always looking for great pieces that have good lines and can be repurposed. This chair was found in one of the multi-dealer warehouses in Stamford. I reupholstered it in a black-and-white houndstooth fabric from Lee Jofa, which imparts a classic pattern onto the form of the simple geometry of this chair." Similar chairs through Hiden Galleries, Stamford, (203) 363-0003, hidengalleries.net



NANCY CORBETT



CONNIE COOPER
Diedra Console

///

"I love the way the classic Greek key motif was used in conjunction with the more modern shape of this console. The bold contrast of the charcoal gray and cream finish makes it especially striking. This console was custom designed for an entryway to give it a transitional and dramatic look." *Old Biscayne, through Connie Cooper Designs*



CHRISTINA SULLIVAN
 ROUGHAN
Katherine Nesting Tables

///

"These nesting tables are the epitome of beauty. Every angle is subtly different yet visually perfect and functional. I would pair them with a leather club or wing chair—instant chic!" *John Lyle Design, New York City, (646) 344-1964, johnlyledesign.com*

NANCY CORBETT



Having worked in London as well as in New York and Connecticut, **Havilande Whitcomb** brings an international sophistication appropriate to the setting and unique to the people living in it. She also designs both interiors and exteriors of private jets, and her firm, Aviation Aesthetics, has an international following. *Havilande Whitcomb Design, Westport, (203) 227-7902, hwdesignllc.com*

Geometrics: Floor Coverings



CHRISTINA SULLIVAN ROUGHAN

Lance Wovens Carpet 417 in Desert

///

“What a wonderful way to dress up a study, library, or music room. Lance Wovens’s rugs are traditional with a modern accent, and with their exquisite craftsmanship and detailing will last a lifetime.” *Norwalk, (855) 852-6829, lancewovens.com*



CONNIE COOPER

Palace Oriental Rug MA-144

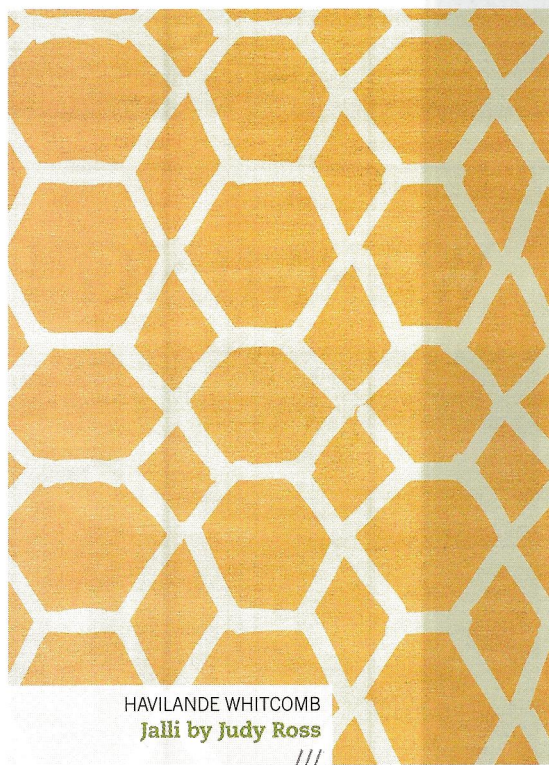
///

“The very large repeat in this gray wool and silk handmade Nepalese rug makes a dramatic statement for any type of room. It would make a great backdrop for other fabrics and furniture using a variety of shapes, patterns, and colors.”

Wilton, (203) 762-7060, palaceorientalrug.com



Christina Sullivan Roughan believes that interiors are meant to be lived in, and reflect the people who live in them. “Each client has different needs, desires, and budgets,” she says. “It’s my job to extract that information and create a beautiful interior tailored to each client.” *Roughan Interior Design, Weston, (203) 769-1150, roughaninteriors.com*



HAVILANDE WHITCOMB

Jalli by Judy Ross

///

“With hints of traditional and modern in its color tones of cantaloupe silk and ivory, this rug would form an interesting backdrop for a room that needs a fresh look.

I like that rather than perfect shapes, the lines of this geometry look hand-formed and natural.”

Judy Ross Textiles, New York City, (212) 842-1705, judyrosstextiles.com