

COLOR FULL: 40 TOP PAINT PICKS

# at home

IN FAIRFIELD COUNTY

# *gardens!*

**CHIC IN  
GREENWICH**



**GET THE GOODS  
PASTELS,  
FLORALS &  
MORE**

**PLANTERS PUNCH  
10 MODERN  
CONTAINERS**

\$5.95

MARCH/APRIL 2016  
ATHOMEFC.COM



Benjamin Moore  
Super White  
OC-152

Farrow & Ball  
Great White  
2006

Benjamin Moore  
Mascarpone  
AF-20

Fine Paints of Europe  
Cool Marble  
MV60

Farrow & Ball  
Shadow White  
282

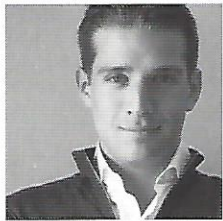
Fine Paints of Europe  
Sea Salt  
MV45



“Blush is so hot right now—I can’t get enough of it! It’s just the one step up from a beautiful neutral that can take a room to the next level. Try Benjamin Moore Gentle Butterfly 2173-70, as it’s a soft hue with just a touch of color—it’s there, but it doesn’t scream a color. Soft and sophisticated, I’d pair it with brass and alabaster accents for the ultimate elegant bedroom. Then, consider painting the ceiling Benjamin Moore Sterling Silver 1461, an almost-charcoal, to give the room some edge.”



“With its slight lilac hue, Farrow & Ball Great White 2006 is a fun way to awaken your interiors for the arrival of spring. It works amazingly well in multiple applications, but my favorite is on dining room walls in a gloss finish. To create a perfect contrast, paint the trim and ceiling a gloss white, such as Benjamin Moore Super White OC-152. This wonderful wall paint can be the backdrop for any spring color in flowers, fabrics, furnishings and art. Imagine a table setting with hydrangea blue, tulip yellow or mandarin orange—with such a blossoming burst of color, I’d never want to leave!”



“The brand-new Farrow & Ball Shadow White 282 is destined to be a classic—the white jeans of paint! Shadow White’s nearly perfect combination of pigments makes it my new favorite go-to shade for walls. I love its warmth and subtle color, which make it a perfect neutral to use with other colors. It has just enough greige to be flattering and none of the maizey pigment. For white trim that’s crisp but not too bright, pair Shadow White with Benjamin Moore Mascarpone AF-20.”

**SAM ALLEN**  
Sam Allen Interiors  
samalleninteriors.com

“Benjamin Moore Wisteria AF-585, a deep, warm, earthy lavender, complements the faded glory of weathered teak, doesn’t overwhelm nature’s colorful blooms, and adds a soft essence of a complex color. Wisteria is versatile enough to be used on an exterior door, for selectively repainting existing furniture or as a beautiful, rich room color. I especially like it paired with deep, platinum, ‘boney’ oatmeals and brown tones, such as Farrow & Ball London Clay 244. It’s a sophisticated complement with brass details and welcomes unexpected splashes of color.”

**SUSIE EARLS**  
Susie Earls Design  
susieearlsdesign.com



“I was fortunate to work on a project at Mount Vernon, George Washington’s home in Virginia. Its historical colors are in a collection from Fine Paints of Europe, and I found them inspiring for other current projects. I’m imagining a porch by the ocean with these watery blue-greens, Sea Salt MV45 and Cool Marble MV60, that are happy near a garden and feel cool under sun and sky.”

**HAVILANDE WHITCOMB**  
Havilande Whitcomb Design  
hwdesignllc.com



Benjamin Moore  
Wisteria  
AF-585



Benjamin Moore  
Sterling Silver  
1461



Farrow & Ball  
London Clay  
244



Benjamin Moore  
Gentle Butterfly  
2173-70

PHOTO OF SAM ALLEN: SIACY BASS; PHOTO OF SUSIE EARLS: KIRI STARYK; PHOTO OF HAVILANDE WHITCOMB: NANCY COURETT